

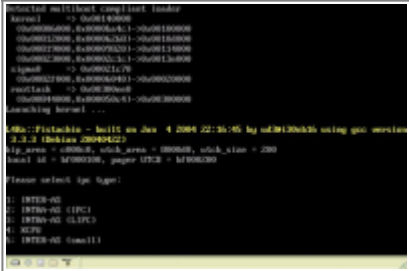

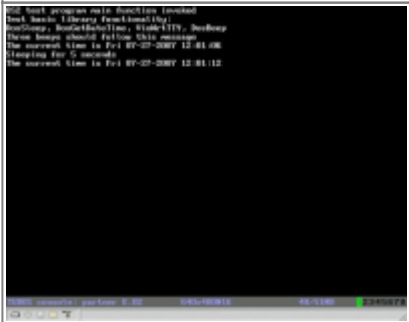


osFree screenshots

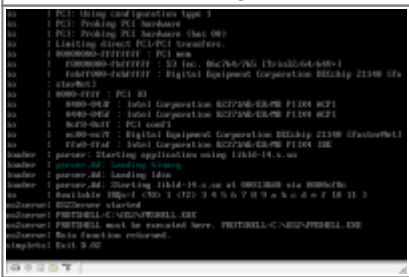
Click on a thumbnail to enlarge. Oldest screenshots are shown first.

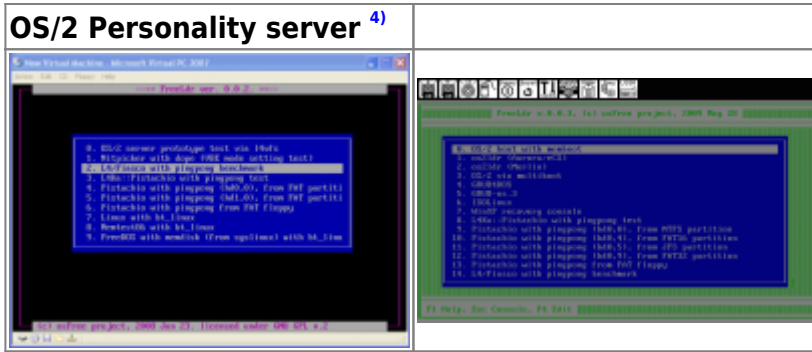
Version 0.0.2

All screenshots in this section are of software currently under development.

<p>Boot Sequence</p> 	<p>With Original Bootsector</p> 
<p>Boot Sequence with LILO ¹⁾</p> 	<p>OS/2 Test Application ²⁾</p> 
<p>OS/2 Application Output ³⁾</p> 	

Version 0.0.3

<p>OS/2 Personality server ⁴⁾</p> 	
<p>FreeLdr boot menu ⁵⁾</p>	<p>FreeLdr boot menu ⁶⁾</p>



Version 0.0.4

OS/2 LX Executable (Win32 host) 7)	OS/2 LX Executable (L4 host) 8)
<p>A screenshot of a terminal window showing a list of memory addresses and hex values, likely representing system memory or kernel data. The text is dense and appears to be a dump of memory contents.</p>	<p>A screenshot of a terminal window showing a list of memory addresses and hex values, similar to the Win32 host screenshot, but with different values, indicating the L4 host environment.</p>
FreeDOS startup	argenv.exe (arguments and environment test)
<p>A screenshot of a terminal window showing the output of the argenv.exe program, which tests arguments and environment variables. The output includes various system parameters and their values.</p>	<p>A screenshot of a terminal window showing the output of the argenv.exe program, which tests arguments and environment variables. The output includes various system parameters and their values.</p>
sort.exe (DosOpen test)	
<p>A screenshot of a terminal window showing the output of the sort.exe program, which performs a DosOpen test. The output displays a list of sorted entries, likely representing files or system data.</p>	

Version 0.0.5



1)

Here you can see result of FreeLDR, Kickstart, L4Ka:Pistachio, sigma0 server and initial screen of pingpong application.

2)

Here you can see result of GRUB, Bootstrap, Fiasco and core servers with ongoing port/reimplementation of OS2Linux for L4 microkernel. Output to log server.

3)

Same as above, but output to graphical L4Con console.

4)

CONFIG.SYS already parsed and start of PROTSHELL execution

5)

simple menu

6)

full-featured menu

7)

This is native OS/2 application in LX format executed under OS/2 Personality server on top of Win32 host

8)

This is native OS/2 application in LX format executed under OS/2 Personality server on top of L4 host

9)

menu screen

From:

<https://ftp.osfree.org/doku/> - **osFree wiki**

Permanent link:

<https://ftp.osfree.org/doku/doku.php?id=en:screenshots&rev=1363096864>

Last update: **2013/03/11 23:00**

