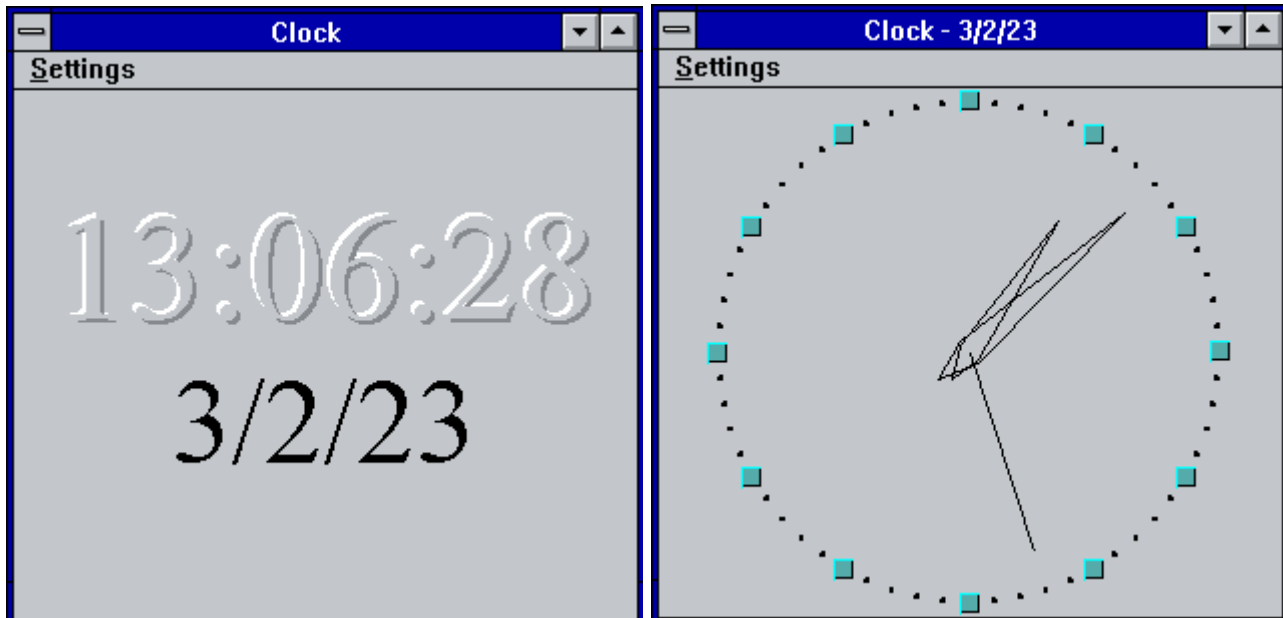




# Clock

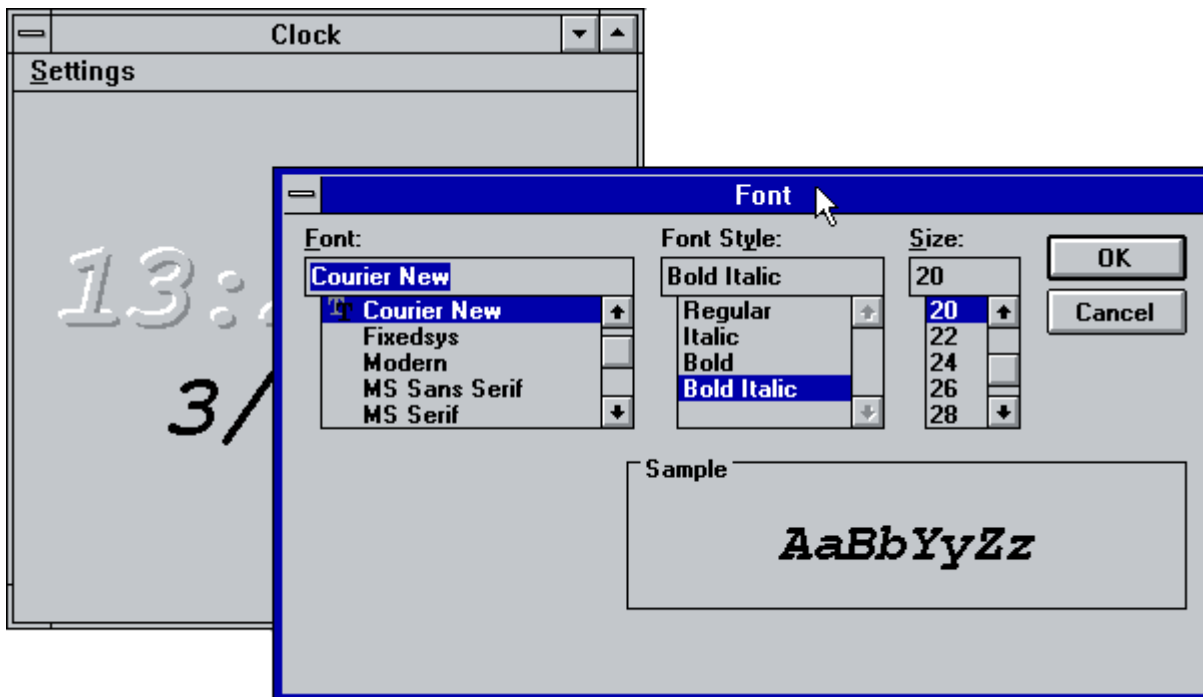
The simplest application is Clock. Clock displays the current date and time, using either analog or digital representation, as shown below:



View can be changed using **Settings** menu items **Analog** and **Digital**. You can disable or enable display of **Seconds** and **Date** part of the current time. All things changed in **Settings** saved on Clock close. On startup Clock restores all Settings.

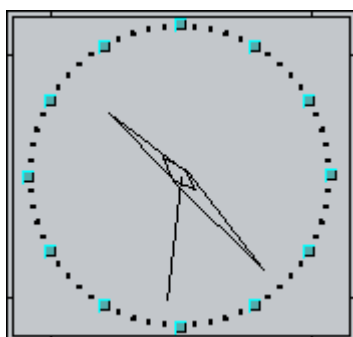
## Clock's Font

Font, used for Digital Clock can be changed via **Set Font...** item of **Settings** menu.



## Title bar and Icon clock

Title bar of Clock window can be hide by mouse double-click on clock face or via **Settings** menu. While title bar is hidden window can be moved by mouse click and move on any part of window, except frame. Mouse double-click or Esc key can be used to restore title bar.



If you **Minimize** window, then simplified clock shown on Icon.



To prevent overlapping of Clock by other windows you can set **Always on top** mode via **System** menu.

## Date and Time format

Date and time format can be adjusted via [Control Panel](#). Restart Clock to apply changes.

# CLOCK.INI

Clock saves and restores its settings via CLOCK.INI file. All settings stored in Clock section

- Maximized = 1 | 0
- sFont = Facename
- Options = bAnalog, bMinimized, bSeconds, bWithoutTitle, bAlwaysOnTop, bDate
- Position = x1, y1, x2, y2

## Download

You can download source code and binaries from [GitHub](#). Clock comes under LGPL-2.1 license.

### Win16 Applications

[Calculator](#) [Calendar](#) [CARDFILE](#) [CHARMAP](#) [Clipboard Viewer](#) [Clock](#) [Control Panel](#) [DRWATSON](#) [EXPAND](#) [FASTOPEN](#) [MPLAYER](#) [MSD](#) [Notepad](#) [PACKAGER](#) [PBRUSH](#) [PIF Editor](#) [printman](#) [Program Manager](#) [regedit](#) [setup](#) [SOL](#) [soundrec](#) [System Configuration Editor](#) [Task Manager](#) [WINFILE](#) [WINHELP](#) [Minesweeper](#) [winsheld](#) [Windows Version write](#)

2023/12/23 10:47 · [prokushev](#) · [0 Comments](#)

From:

<https://ftp.osfree.org/doku/> - **osFree wiki**

Permanent link:

<https://ftp.osfree.org/doku/doku.php?id=en:docs:win16:applications:clock>

Last update: **2023/12/23 10:48**

